



TRICO
AN ENERGY COOPERATIVE

Overhead Power Line Safety



Overhead power line tips for construction workers

Before you begin construction work

Survey for overhead power lines

LOOK UP!

**Best safety practice:
Never get closer than 10 feet
to an overhead power line!**

- Consider all overhead lines as energized until the electric utility indicates that the line is not energized and has been grounded.
- In construction work, an overhead power line safety component should be part of your employer's overall safety and health program and safety training.
- If overhead lines are present, call the utility company and find out what voltage is on the lines. Ask if the utility company can shut off the lines while you are working near them.
- If overhead lines cannot be shut down, ask the utility company if they can install insulation over the lines during the time you will be working near them.

Working with tools and equipment

- If the lines cannot be shut down and/or insulation applied, a minimum safe distance of 10 feet must be established. Have a brief job site meeting to discuss the planned work as it relates to the power lines. Discuss topics such as the use of long-handled tools, and equipment (raised dump trucks, back hoes, etc.) that could come in contact with the lines. Consider the need for a designated person to monitor activities around the lines.
- Only use nonconductive ladders when working on or near overhead power lines.
- Employees shall not be permitted to approach or carry any conductive object closer than 10 feet to an energized line. The only exception is for trained and qualified utility employees using insulated tools designed for high voltage lines.

Overhead power line tips for construction workers equipment & cranes

- If using equipment near lines rated at 50,000 volts (50 kV) or less, minimum distance between the energized lines and any part of the equipment shall be at least 10 feet.
- If using equipment near energized lines rated at 50,000 volts (50 kV) or more, minimum distance between the energized lines and any part of the equipment shall be at least 10 feet plus 0.4 inch for each 1,000 volts over 50,000 volts.
- If using a crane near lines, a minimum distance between the energized lines and any part of the crane (boom, load line, etc.) shall be at least 20 feet. OSHA 1926.1408
- Where it is difficult for the operator to maintain the desired clearance by visible means, an employee shall be designated to observe the distance between the crane/equipment and the line so as to give timely warning to the operator. This should be the **ONLY** job the monitor is performing when this hazardous condition is present.

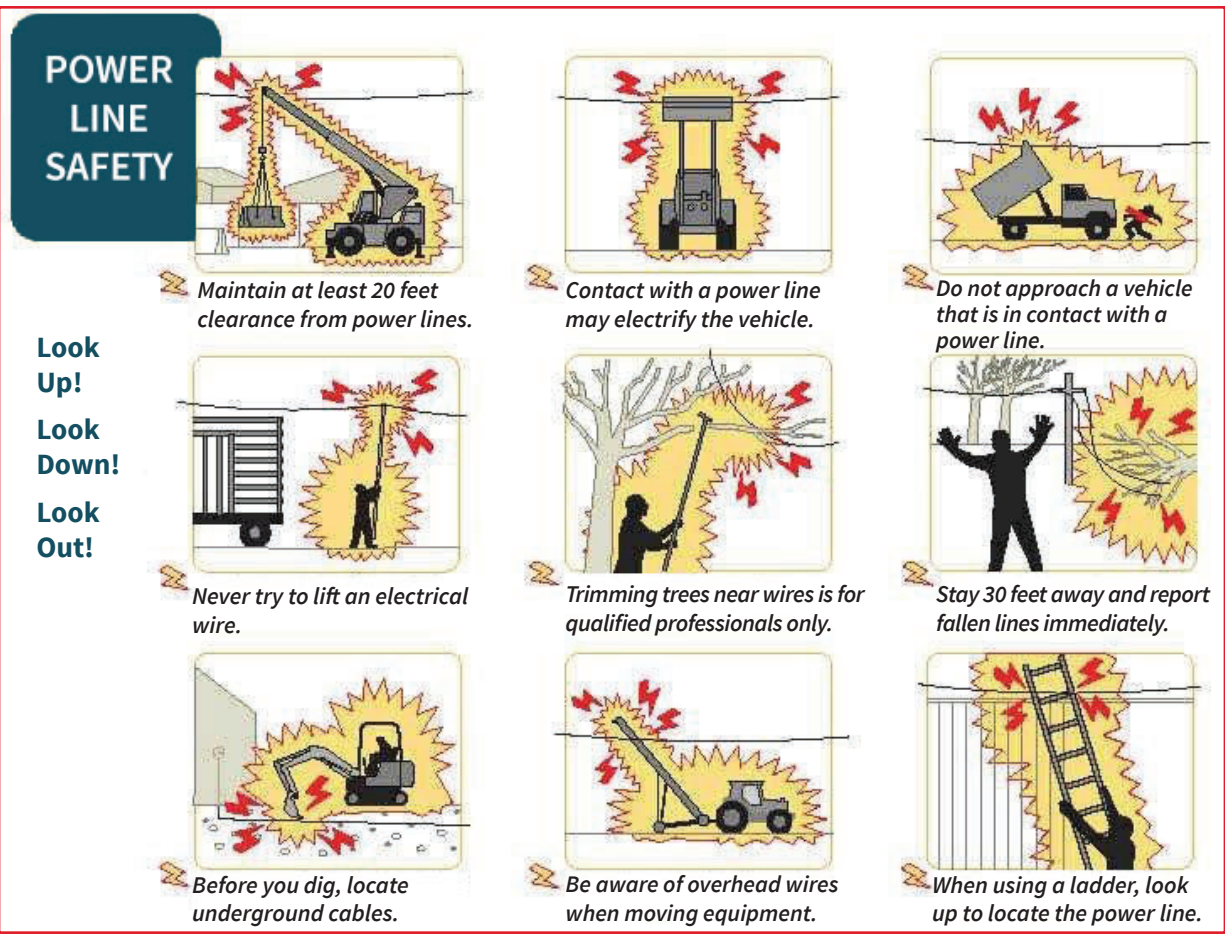
Overhead power line safety law

Accidents involving contact with overhead energized electrical lines occur needlessly every year. These accidents can damage equipment and more importantly, sometimes cause serious injury or death. To help prevent these accidents, the Arizona Legislature enacted a law designed to make working near overhead electrical lines safer.

Title 40, Chapter 2, Arizona Revised Statutes, Article 6.4: 40-360.42. Activity near overhead line; safety restrictions: Unless danger against contact with high voltage overhead lines has been effectively guarded against as provided by section 40-360.43:

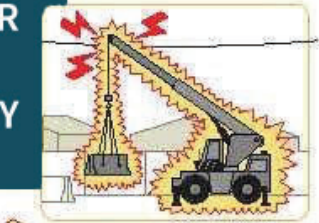
1. A person or business entity shall not, individually or through an agent or employee, require any other person to perform any function or activity upon any land, building, highway or other premises if at any time during the performance of any function or activity it is possible that the person performing the function or activity could move or be placed closer to any high voltage overhead line or if it is possible that any part of any tool or material used by the person could be brought closer to any high voltage overhead line during the performance of any function or activity than the following clearances:
(a) For lines rated 50 kv or less, six feet of clearance.
(b) For lines rated over 50 kv, six feet plus 0.4 inch for each kv over 50 kv.

—Continued on next page

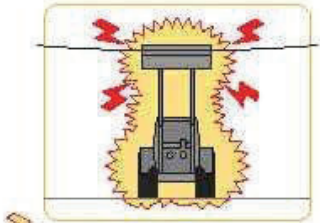


POWER LINE SAFETY

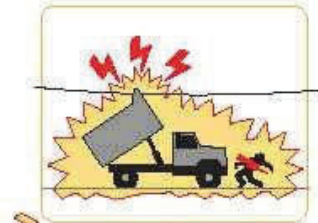
Look Up!
Look Down!
Look Out!



Maintain at least 20 feet clearance from power lines.



Contact with a power line may electrify the vehicle.



Do not approach a vehicle that is in contact with a power line.



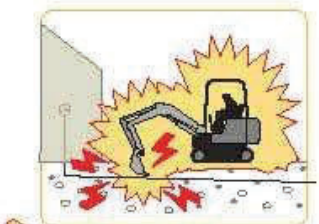
Never try to lift an electrical wire.



Trimming trees near wires is for qualified professionals only.



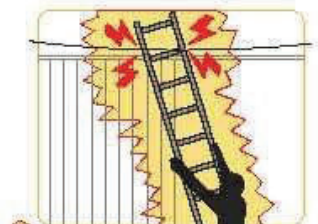
Stay 30 feet away and report fallen lines immediately.



Before you dig, locate underground cables.



Be aware of overhead wires when moving equipment.



When using a ladder, look up to locate the power line.

2. A person or business entity shall not individually, through an agent or employee or as an agent or employee, operate any mechanical equipment or hoisting equipment or any load of such equipment, any part of which is capable of vertical, lateral or swinging motion closer to any high voltage overhead line than the following clearances:

- (a) For lines rated 50 kV or less, 10 feet of clearance.
- (b) For lines rated over 50 kV, 10 feet plus 0.4 inch for each kV over 50 kV.

40-360.43. Activity in close proximity to lines; clearance arrangements; procedure; payment; notice

- A. If any person or business entity desires to temporarily carry on any function, activity, work or operation in closer proximity to any high voltage overhead line than permitted by this article, the person or business entity responsible for performing the work shall promptly notify the public utility operating the high voltage overhead line. The person or business entity may perform the work only after satisfactorily mutual arrangements, including coordination of work and construction schedules, have been made between the public utility operating the lines and the person or business entity responsible for performing the work. Arrangements may include placement of temporary mechanical barriers to separate and prevent contact between material, equipment or persons and the high voltage overhead lines or temporary de-energization and grounding or temporary relocation or raising of the high voltage overhead lines.
- B. The person or business entity responsible for performing the work in the vicinity of the high voltage overhead lines shall pay any actual expenses of the public utility operating high voltage

overhead lines in providing arrangements for clearances, except in instances where the public utility operating high voltage overhead lines has installed lines within 10 feet of an existing fixture or structure after the fixture or structure has been in place at the permanent location. The public utility is not required to provide the arrangements for clearances until an agreement for payment has been made.

- C. The public utility shall commence construction for temporary clearances within five working days of an agreement for payment, if required, or from the date of the request of the person responsible for the work. Once initiated, the clearance work will continue without interruption to completion.

40-360.44. Violation; civil penalty

- A. A person or business entity or agent of the person or business entity who violates this article may be subject to a civil penalty in an amount not to exceed five thousand dollars to be imposed by the court in favor of the state to be deposited in the general fund.
- B. If a violation of this article results in physical or electrical contact with any high voltage overhead line, the person or business entity violating this article is liable to the public utility operating the high voltage overhead line for all damages to the facilities and all costs and expenses, including damages to third persons, incurred by the public utility as a result of the contact.

Have questions?

These safety tips are not intended to be all-inclusive; always review and comply with all statutes, regulations and OSHA standards. For more information, contact Trico at (520) 744-2944.



8600 W. Tangerine Rd., Marana, AZ 85658
(520) 744-2944 • www.trico.coop
f @ tricoelectricAZ

